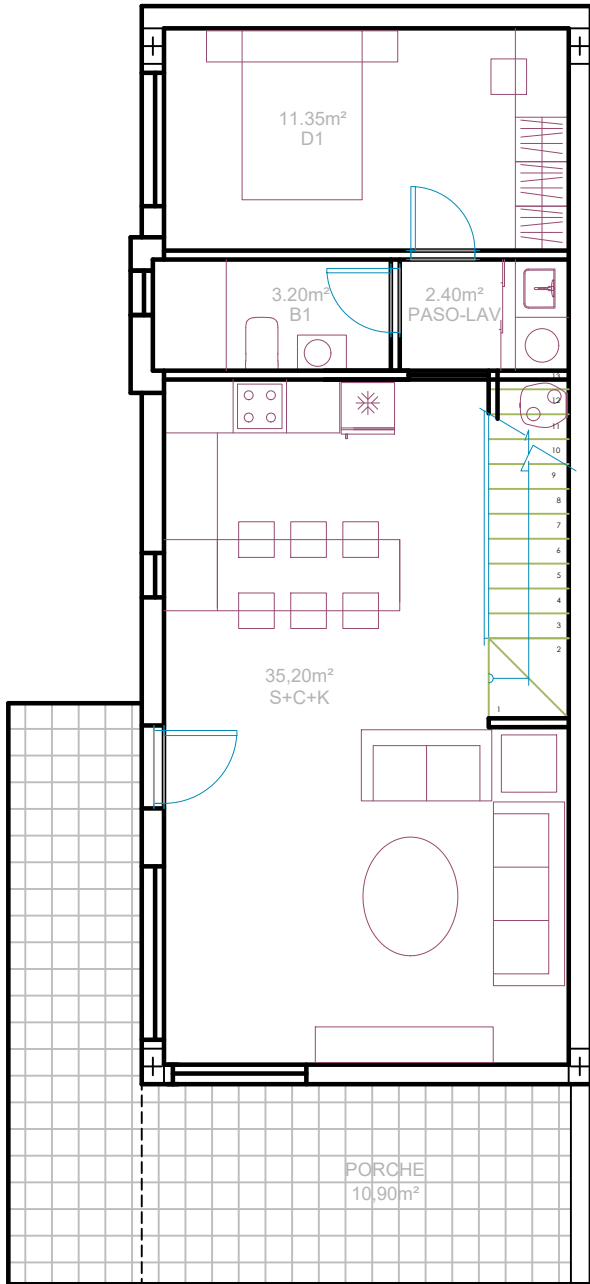
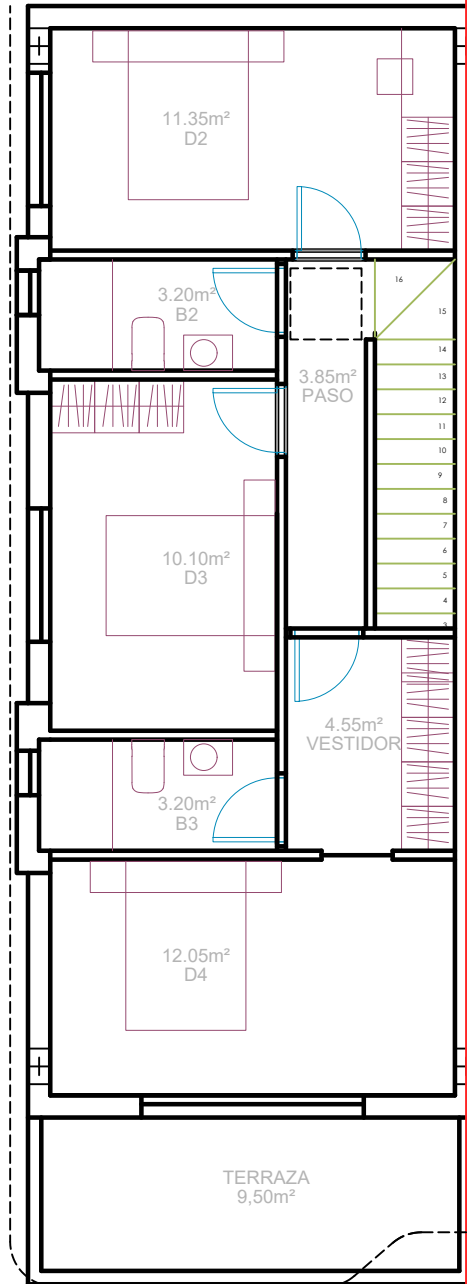


VIVIENDA TIPO A-4

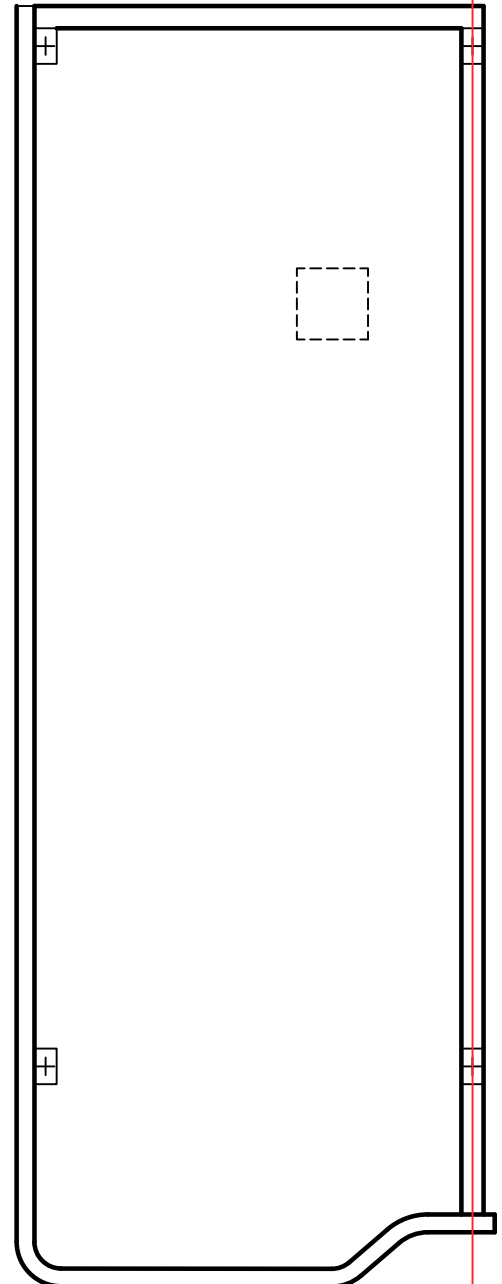
PLANTA BAJA



PLANTA PRIMERA



PLANTA CUBIERTA



SUP. CONSTRUIDA P. BAJA	61,45 m ²
SUP. CONSTRUIDA P. I	59,85 m ²
Porche en P. Baja	10,90 m ²
Terraza en P. I	9,50 m ²
SUP. CONSTRUIDA TOTAL	141,70 m ²

Superficie Parcela	156,60 m ²
--------------------	-----------------------

