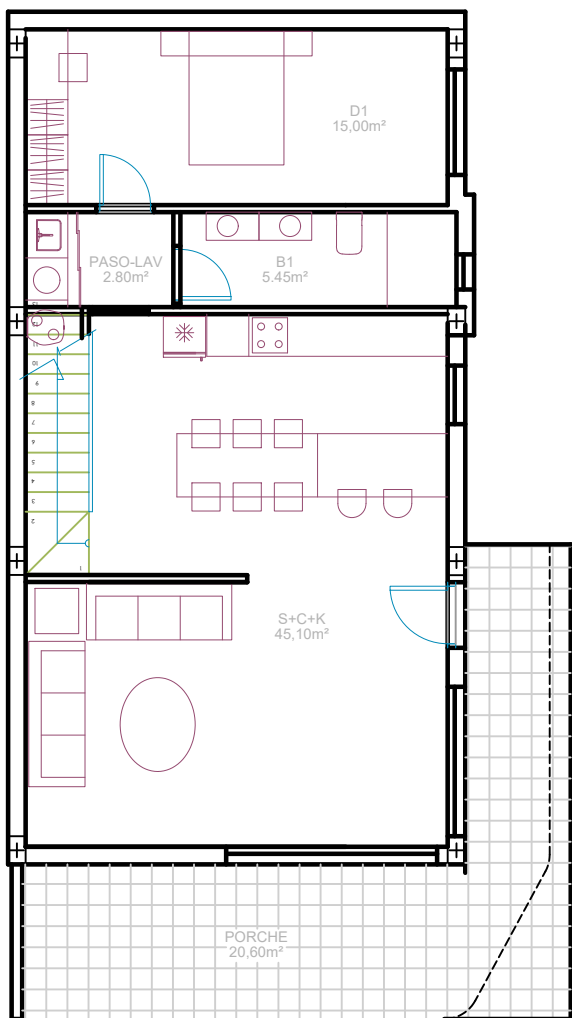
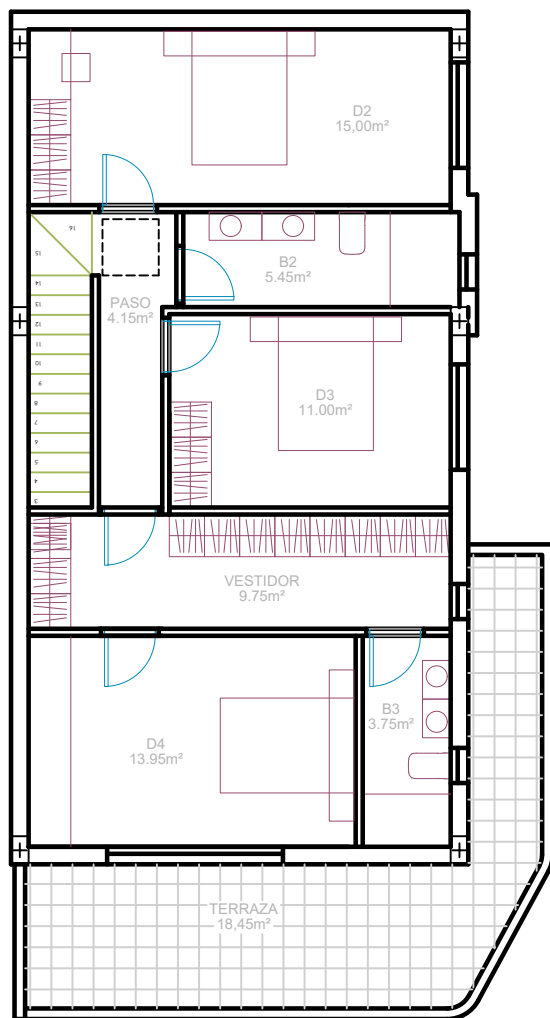


# VIVIENDA TIPO A-3

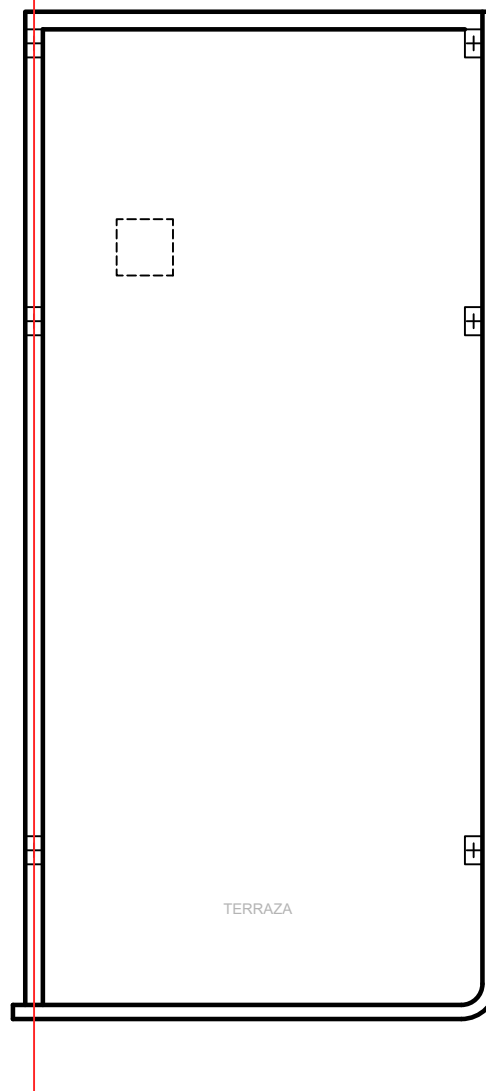
PLANTA BAJA



PLANTA PRIMERA



PLANTA CUBIERTA



SUP. CONSTRUIDA P. BAJA	78,50 m <sup>2</sup>
SUP. CONSTRUIDA P. 1	75,50 m <sup>2</sup>
Porche en P. Baja	20,60 m <sup>2</sup>
Terraza en P. 1	18,45 m <sup>2</sup>
SUP. CONSTRUIDA TOTAL	193,05 m <sup>2</sup>
Superficie Parcela	294,65 m <sup>2</sup>

